

ATALANTA™

SUBMERSIBLE PUMPSETS
FOR SEA AND AGGRESSIVE WATERS

EFFICIENT,
STRONG,
AND RELIABLE



Protecto Engineering Private Limited

ATALANTA Submersible Pumps are available with special features to handle seawater in offshore installations.

The construction is either in SS-316L or SDSS. Nickel Aluminium Bronze Impellers are also used in some applications. We specialize in tailor made solutions for specific requirements of the Customers.

General Construction of the pump and motor

Multistage centrifugal submersible pumps have radial or mixed flow impellers. These are cast ensuring smooth water passages. Dynamically balanced impellers and shaft assemblies guarantee minimal vibrations and wear on the bearing bushes. All the Bearings are water lubricated and protected from sand and other suspended particles.

Discharge outlet fitted to the top bowl streamlines the flow which then passes through Non Return Valve. This can be supplied in screwed or flanged construction.

Intermediate piece (suction housing) of the pump is fitted with pre formed strainer to prevent entry of suspended particulate matter. Cable clips and guard are provided to protect Submersible cable coming out of the motor.

ATALANTA Submersible Motors are 2 pole / 4 pole asynchronous wet squirrel cage induction motors, that are water cooled and lubricated. The motor body is made of SDSS/316/304 and the motor ends are either in SDSS/316L/304 or bronze material.

Tilting pad type thrust bearing is specially designed to withstand high values of axial thrust loads with minimum wear and tear. The stator windings are re-wirable and water cooled. The bearings are made of composites / polymer / rubber lined stainless steel.

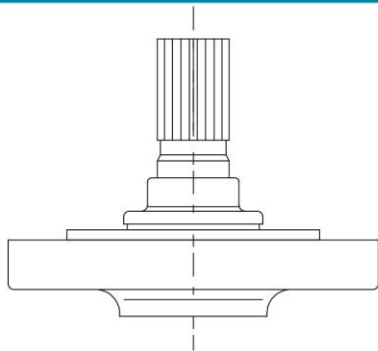
The motor is provided with a reflux pressure - compensating device, to guard against pressure variations. The current is fed through special cables, brought out of the motor through 'water tight' sealing glands and protected by means of a metal sheet covering the length of the pump.

Material of Construction

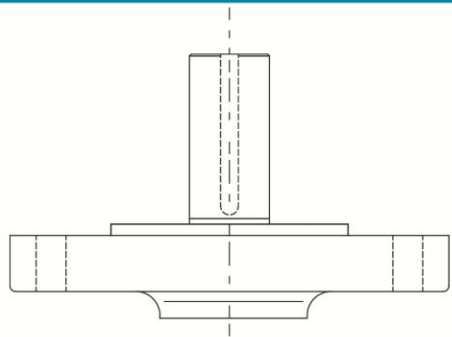
PUMP / MOTOR Components	S.D.S.S	SS - 316L	G.I.SS Fitted
Pump bowl(Stage casing)	ASTM A - 890 Gr. 5A	SS 316 L	GI - Fg 250 Epoxy Coated
Impeller	ASTM A - 890 Gr. 5A	SS 316 L	SS - 316L
Pump Inlet / Intermediate piece	ASTMA - 890 Gr. 5A	SS 316 L	GI - Fg 250 Epoxy Coated
Delivery casing / Outlet	ASTMA - 890 Gr. 5A	SS 316 L	S.D.S.S 25/5 - A890
Bowl (Casing) wear Ring	SDSS - UNS - S32750/60	Ni - Al - Bronze	Zinc Free Bronze
Pumpt Shaft	SDSS - UNS - S32750	SS 316 L	SS 316 L
Bowl Bush	Rubber + UNS - S32750	Rubber + SS-316	Rubber + SS-316
Fasteners	SDSS - UNS - S32750	SS 316	SS - 304
NRV Body	SDSS - UNS - S32750	SS 316 L	GI - Fg 250 Epoxy Coated
Motor Outer Body / Stator Tube	904L	SS 316 L	SS - 304
Rotor Shaft	904L	SS 431	SS - 420
Motor Bush	Carbon / FRP	Carbon / FRP	Ni Led Bronze
Thrust Bearing	Tilting Pad Type	Tilting Pad Type	Tilting Pad Type
Mechanical Seal	Sic / Sic	Sic / Sic	Sic / Sic
Motor Winding	PE2 - PA (Y Class)	PE2 - PA (Y Class) 90°C Max	PE - 70°C Mac

MOTORS

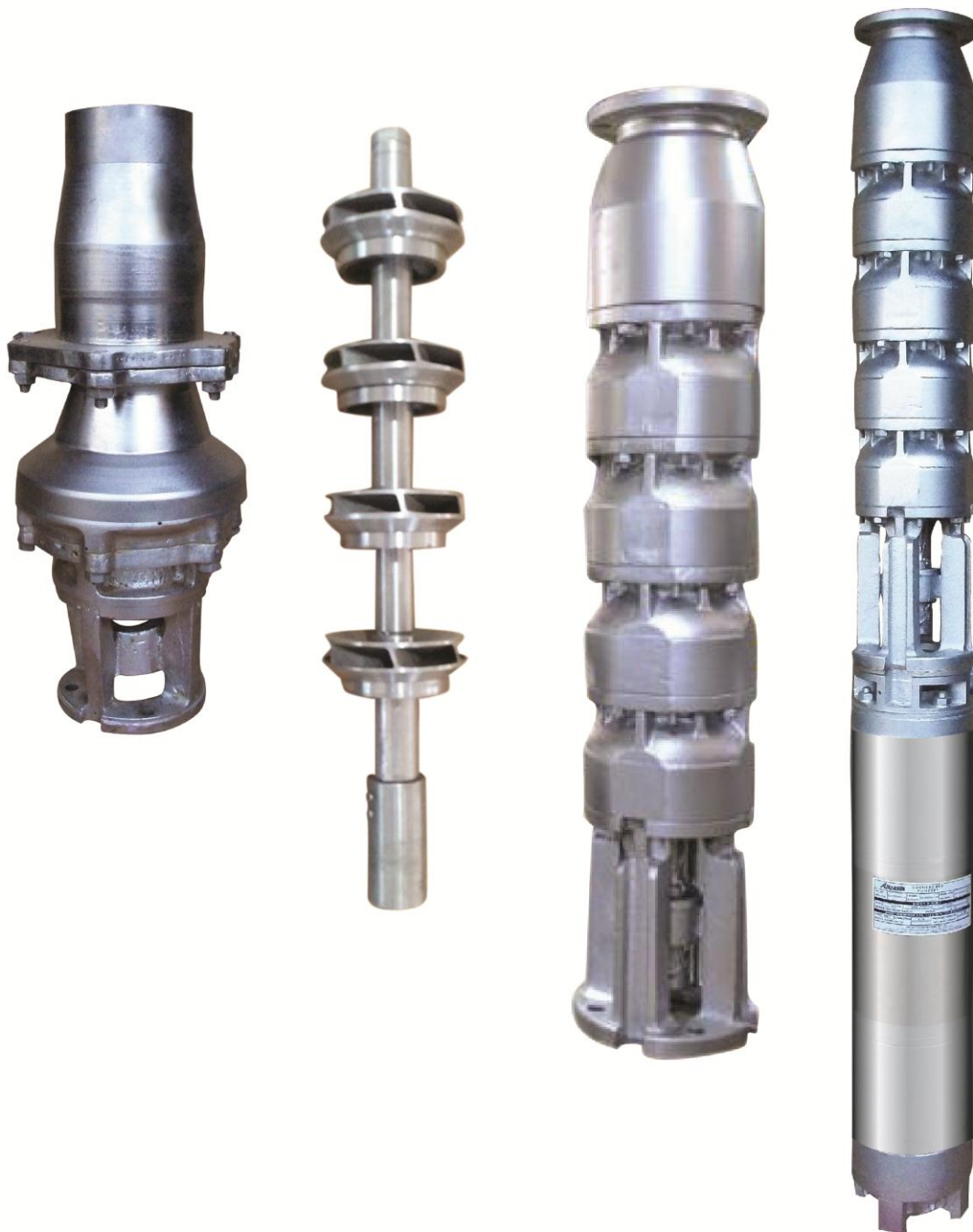
SM6/SM8



SM10/SM12

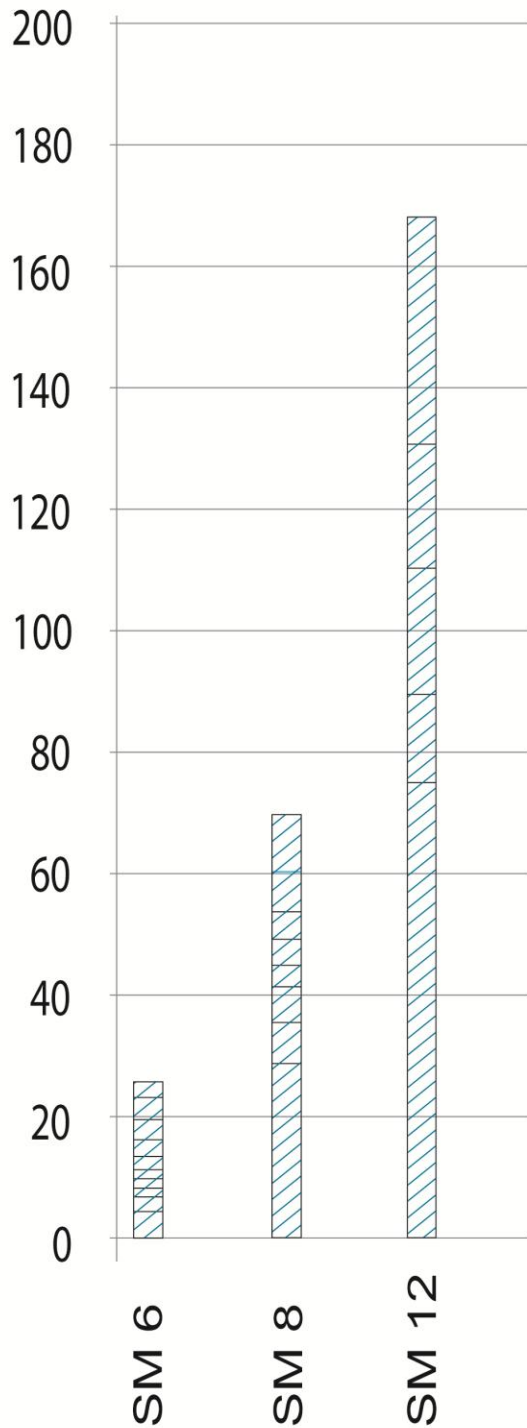


PUMPS & SUB ASSEMBLIES

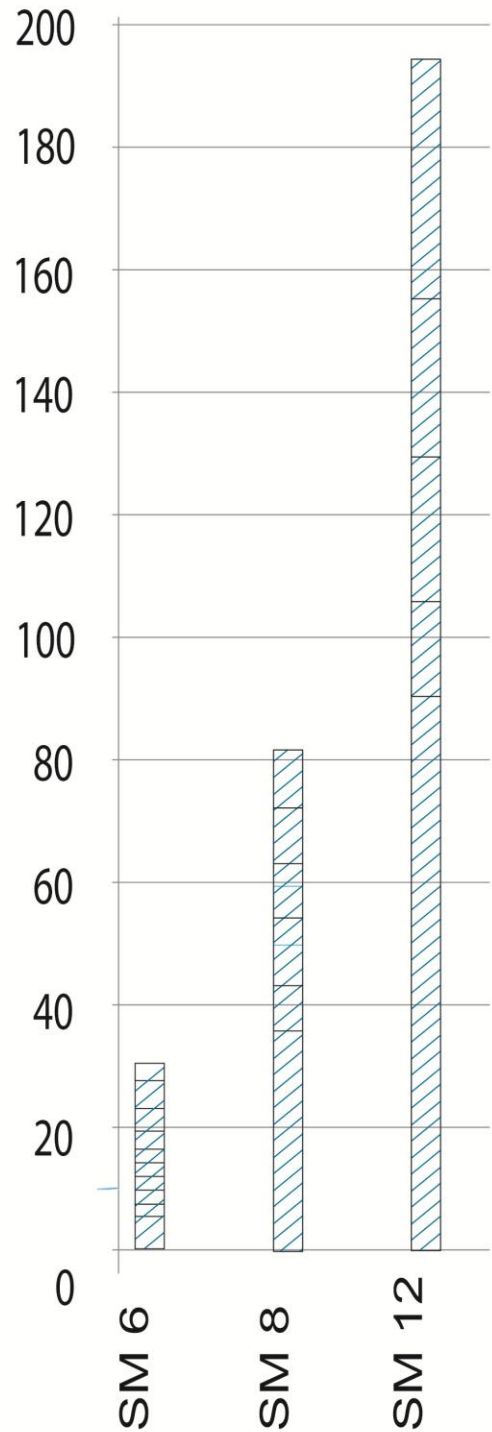


MOTOR OUTPUT- KW

50 Hz



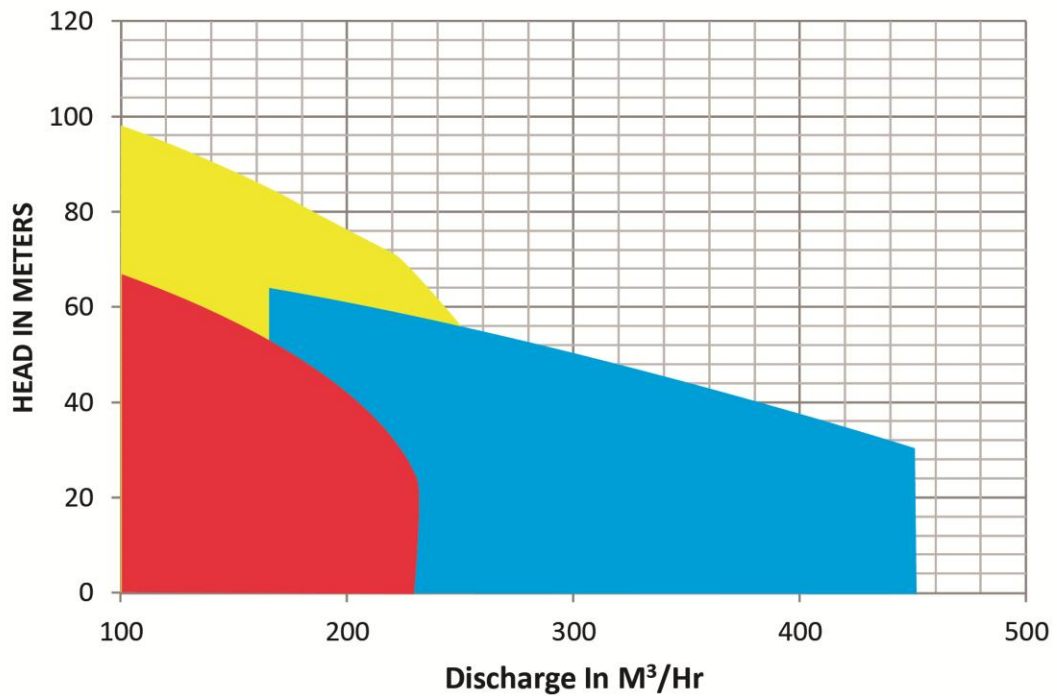
60 Hz



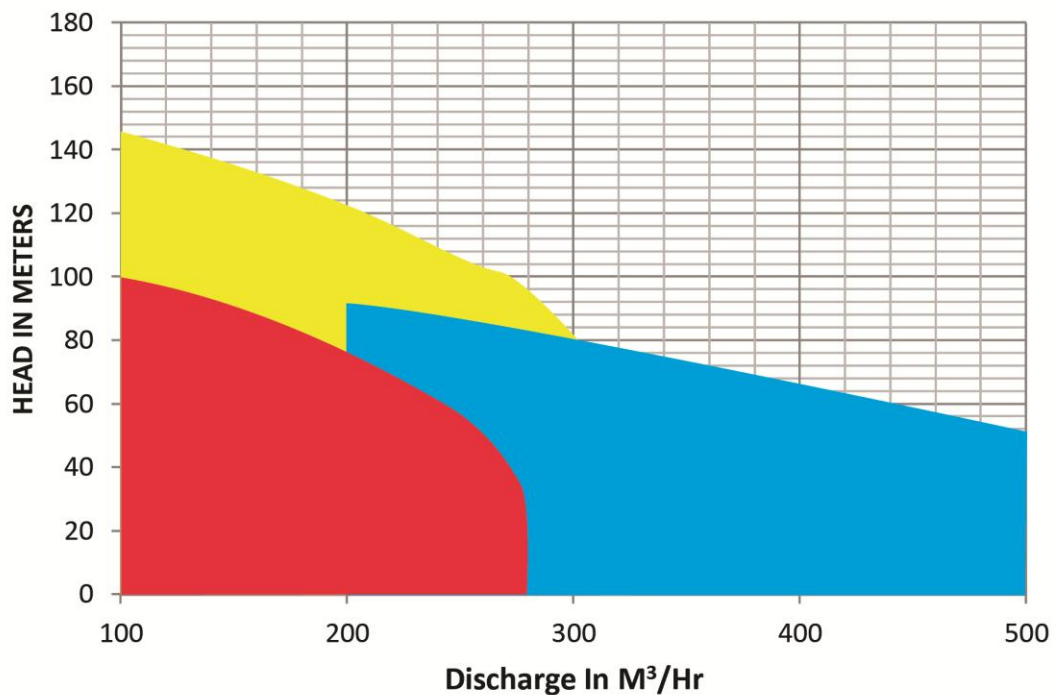
ATALANTA SUBMERSIBLE PUMPS

PUMP TYPE :- SK-102- 3 Stg SK-181 - 4 Stg EKM-353-3 Stg

50 Hz



60 Hz

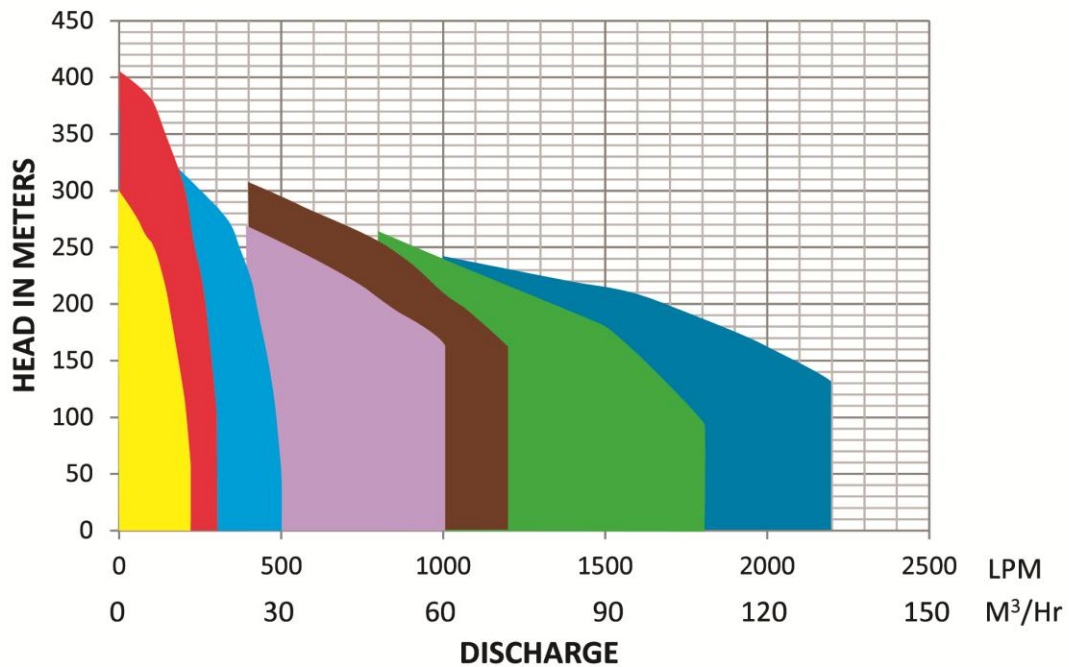


ATALANTA SUBMERSIBLE PUMPS

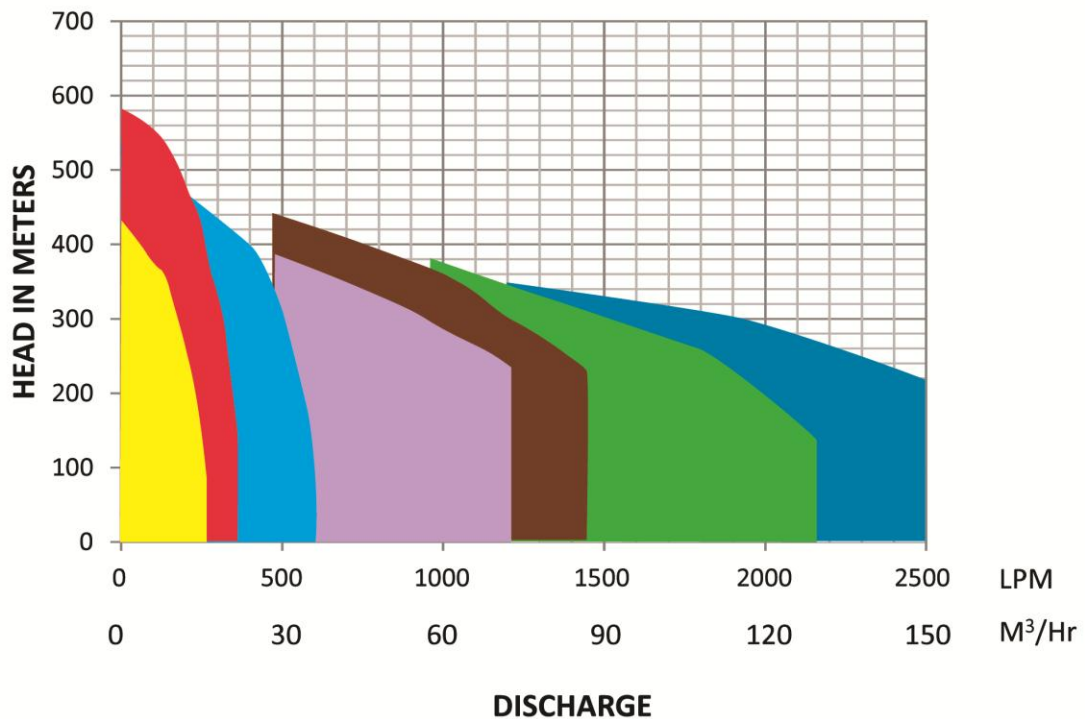
PUMP TYPE : - USB-30 USB-40 USB-70 USB-90

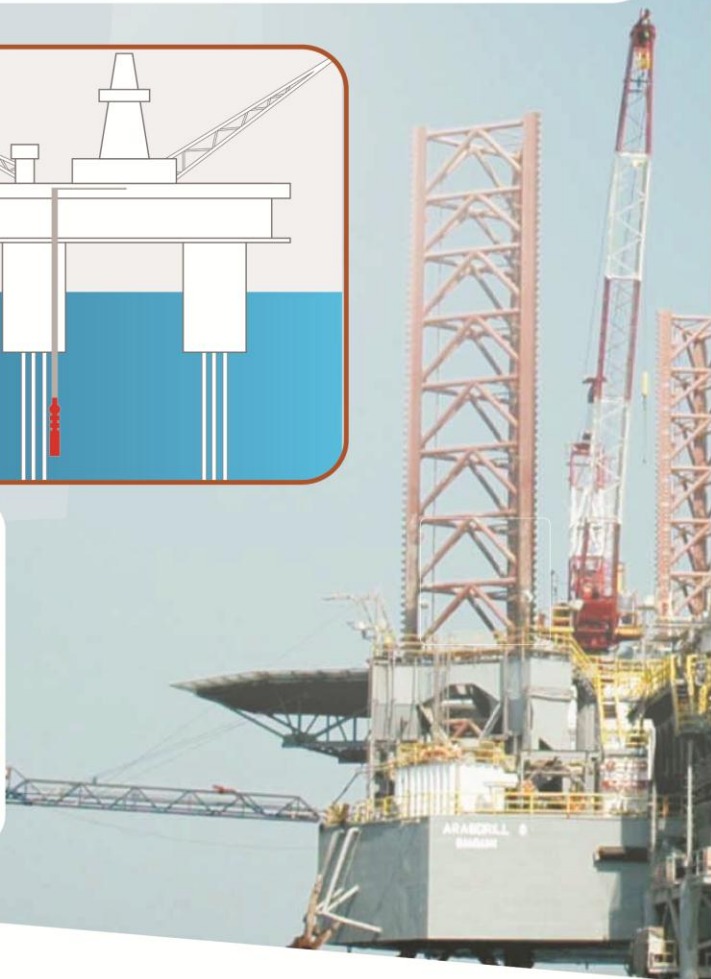
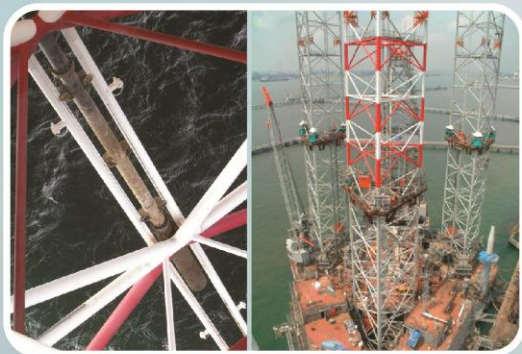
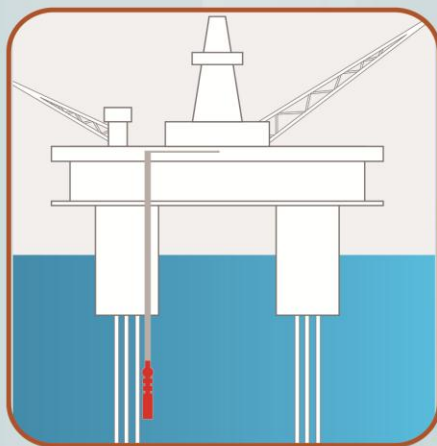
UK-30 UK-50 UK-100

50 Hz



60 Hz





PROTECTO ENGINEERING PVT. LTD

G - 7 Bhadran Bhavan, 32 Nanabhai Lane, Fort Mumbai - 400 001. India.

Tel.: - +912266101715 / +912249711505 / Fax : +912266101716

Email : info@atalantaindia.com / Website : www.atalantaindia.com

With more than 4 Decades of experience in design and manufacturer of submersible pumps. Protecto is recognized for excellent product quality, performance reliability and after sales service support in critical applications in desalination and water reuse.

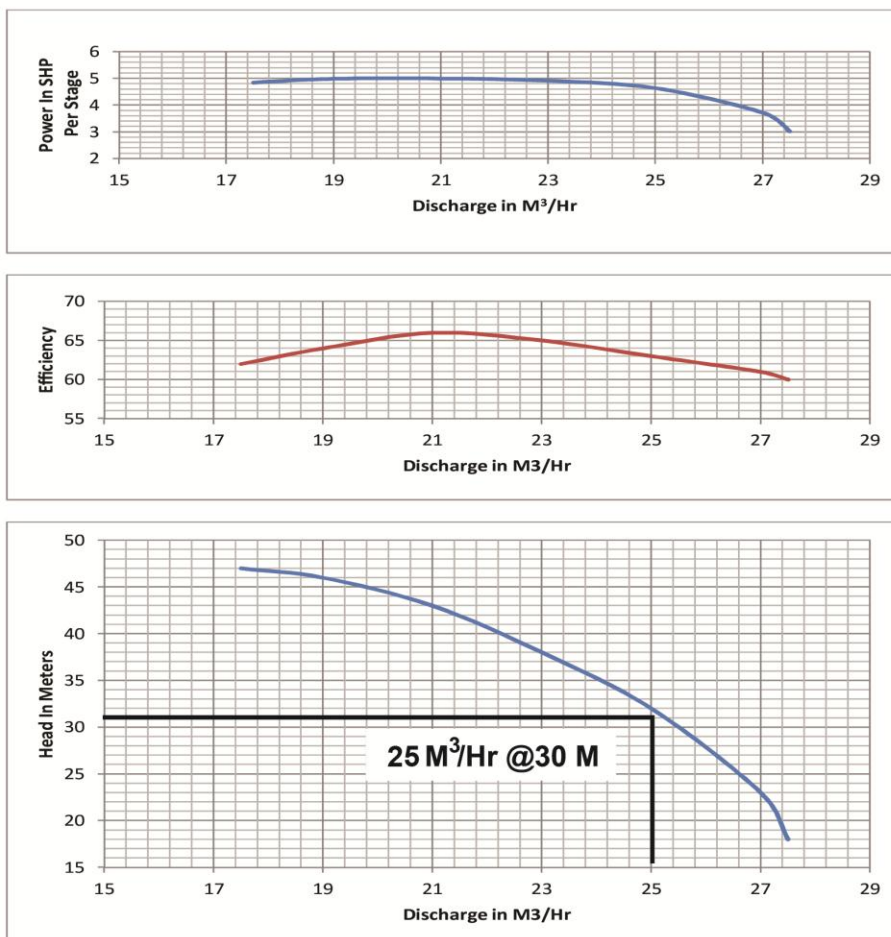
Attached herewith are details of typical 5 HP ATALANTA Submersible pump used in batches of 10-12 in desalination projects.

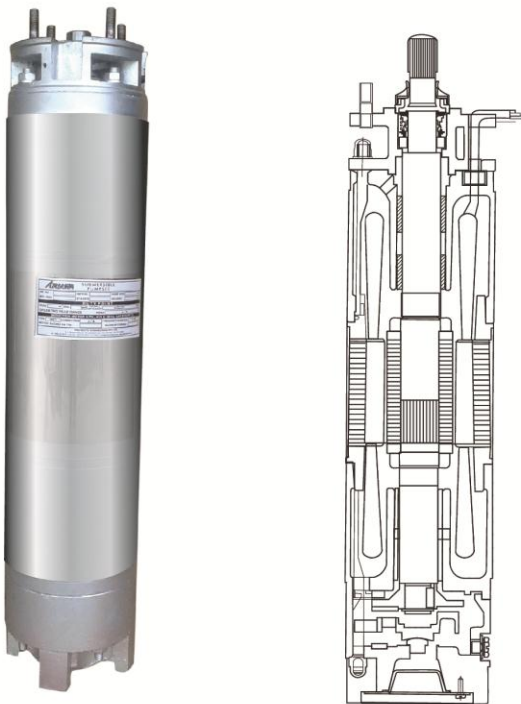
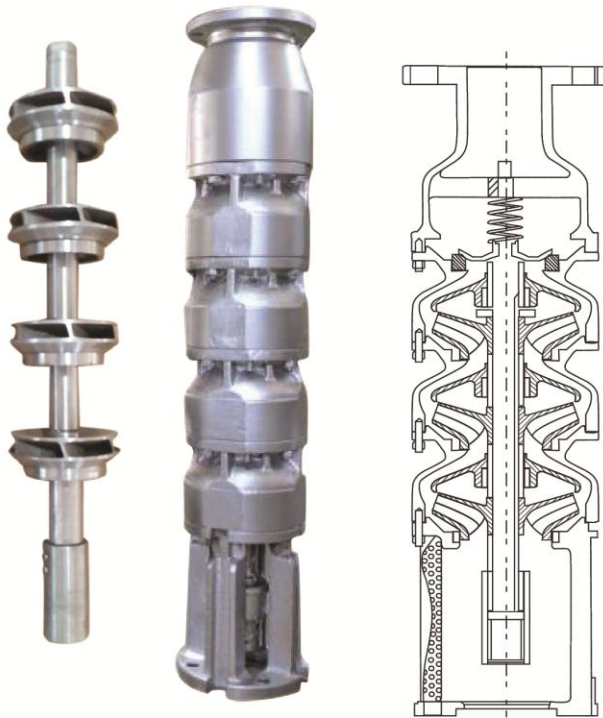
Pumps for different capacities in SDSS or SS316L Or SS 304 construction are available to meet the client duty conditions.

Single Piece cast, impellers and bowls with smooth surfaces last much longer as compared to welded parts.

ATALANTA SUBMERSIBLE PUMP TYPE

A- 55 4 Stage, 5HP, 3Ph., 50Hz, 415 V





PUMPS FOR OFFSHORE DRILLING RIGS & PLATFORMS

ATALANTA Submersible Pumps in SS 316 L Construction are in regular use as make up water, service water and fire water pumps on a number of rigs along the Indian Coast as well as in Middle Eastern Countries.

These are normally in the range of 75HP – 150 HP. Those on the platforms may have smaller capacities from 5HP to 30 HP. These are also available in S.D.S.S. construction.

Given below are the salient features of ATALANTA SUBMERSIBLE PUMP type EKM 353-2 Stages 100HP suitable for 3Ph 460/480V, 60Hz supply

ATALANTA SUBMERSIBLE PUMP TYPE EKM – 353 2 Stage, 100HP, 3Ph., 60Hz, 460/480 V

